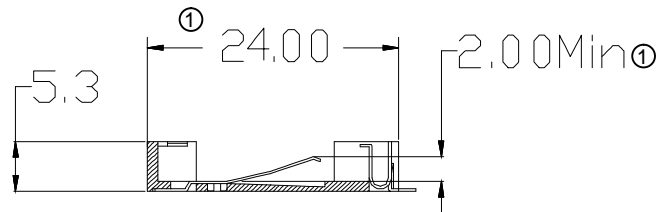


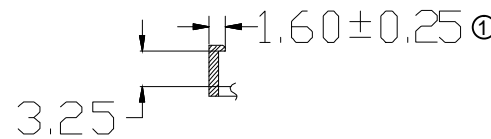
NOTE:

- 1.MATERIAL
 - 1.1 Housing:LCP
 - 1.2 Contact:C5191,Au or Tin over Nickel
- 2.ELECTRIC
 - 2.1 Contact Resistance:30 Milliohms Max.
 - 2.2 Insulation Resistance:1000 Mega Ohms Min.
 - 2.3 Dielectric Voltage:500V AC one Sec Level.
- 3.Operating Temperature:-55°C To +105°C
- 4.Packing:Tape & Reel
- Order Code:A-BAT-CH-C8-EA-xSR4

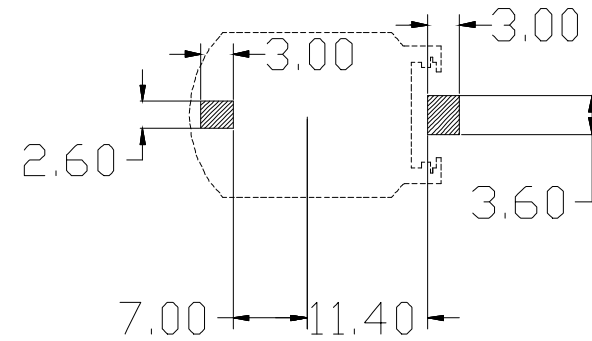
G:Gold Flash
Z:Tin



SECTION A-A



SECTION B-B



PCB BOARD LAYOUT

RoHS compliant
unit:mm

Scale	Free
TOLERANCE	
X.	±0.35
.X	±0.25
.XX	±0.20
.XXX	±0.15
DIM	TOL
Angle	TOL

①	Update the dimensions	12.06.2023	Winnie
②	Drawn	12.20.2021	Peter
Id.	modification	Date	Name

Drawn 12.20.2021 Peter

Approved 12.06.2023 Winnie

A company of BCS

Description: Coin Cell Holders CR2032 Type	
ASSMANN WSW-NO. A-BAT-CH-C8-EA-xSR4	
Drawing-No. ASS 9163 CO	rev01
Customer-No.	SHEET 1 / 1